

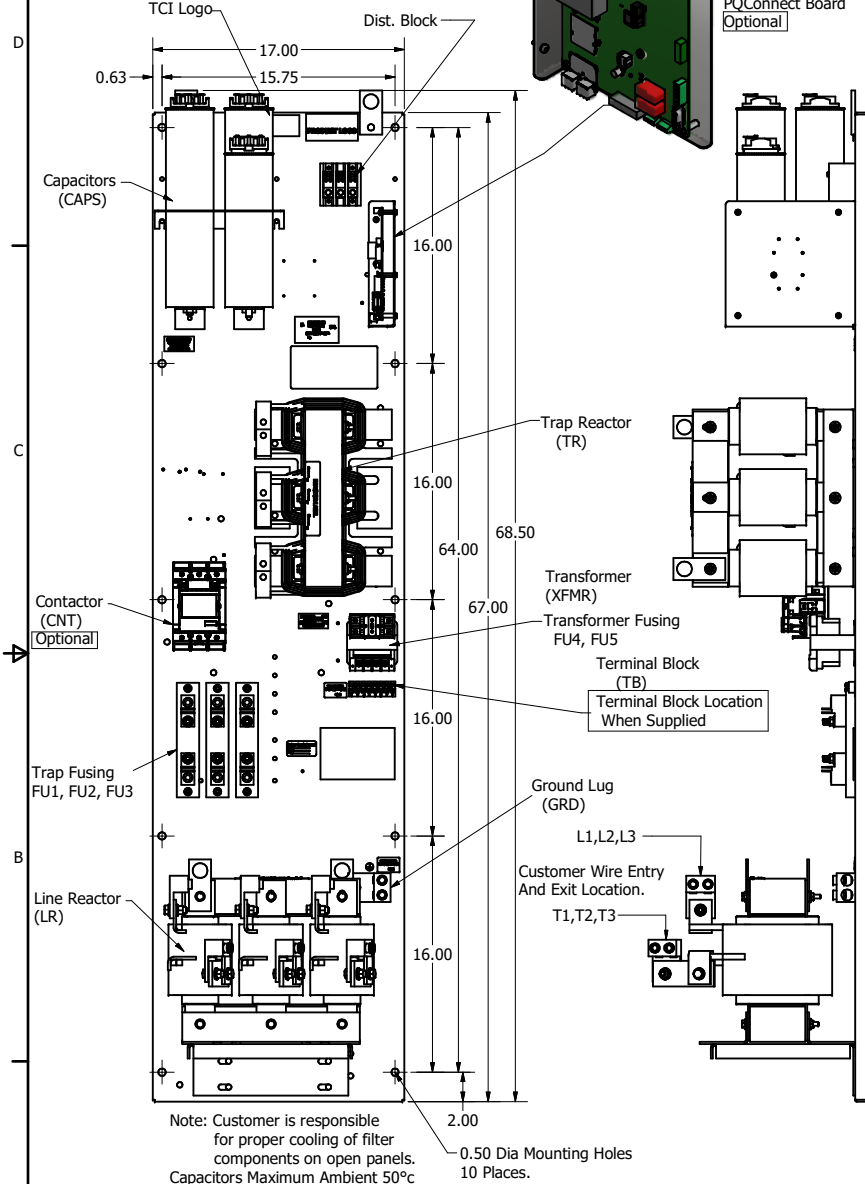
| HGP Open Part Number | Schematic Drawing # | Approx Weight (LBS) |
|----------------------|---------------------|---------------------|
| HGP0250CW0S0000 | 29474-3 | 355 |
| HGP0250CW0C0000 | 29474-2 | 365 |
| HGP0250CW0S1000 | 29474-PQ1 | 357 |
| HGP0250CW0C1000 | 29474-PQ | 367 |

| HGP Part Number | HorsePower (HP) | kVar | Harmonic | Voltage (V) | Maximum Amps (A) | Hz. | Phase |
|-----------------|-----------------|------|----------|-------------|------------------|-----|-------|
| HGP0250CW---- | 250 | 75 | 5th | 600 | 242 | 60 | 3 |

| HGP Enclosed Type 1 Part Number | Schematic Drawing # | Approx Weight (LBS) |
|---------------------------------|---------------------|---------------------|
| HGP0250CW1S0000 | 29474-3 | 540 |
| HGP0250CW1C0000 | 29474-2 | 550 |
| HGP0250CW1S1000 | 29474-PQ1 | 542 |
| HGP0250CW1C1000 | 29474-PQ | 551 |

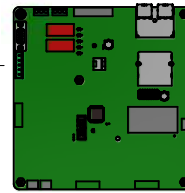
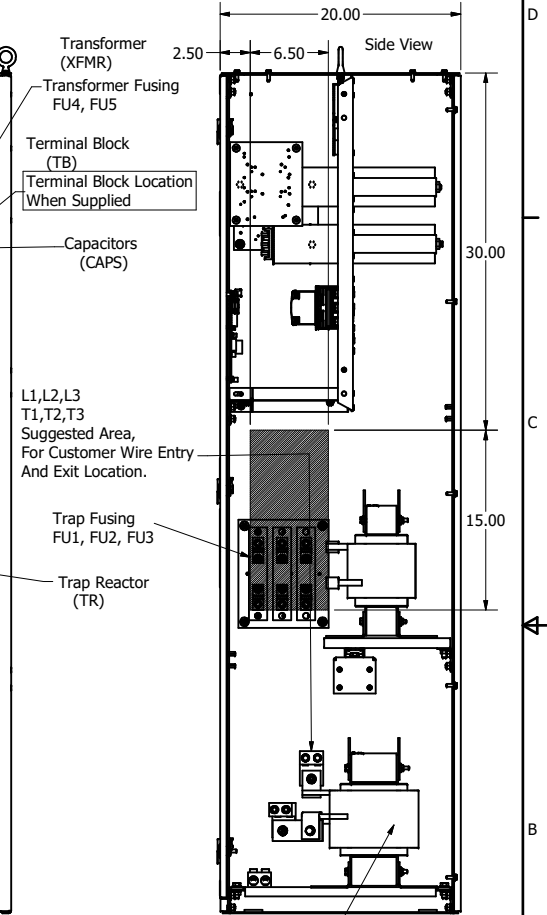
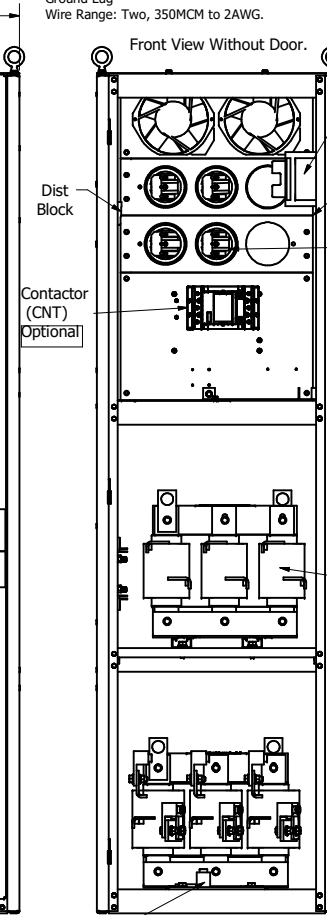
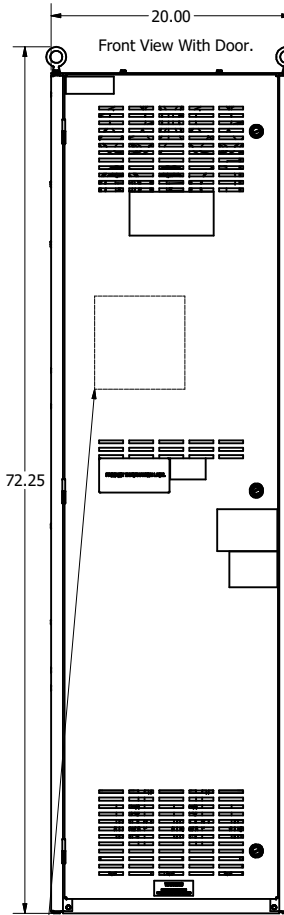
Note: For Torque Information See IOM Manual.

Customer Connections.
L1, L2, L3, T1, T2, T3
Wire Range: Two, 350MCM to 2AWG.

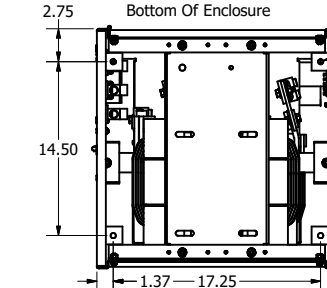


Note: Customer is responsible for proper cooling of filter components on open panels. Capacitors Maximum Ambient 50°C.
0.50 Dia Mounting Holes 10 Places.

| HGP0250CW---- | | | | |
|----------------------------|---------------|---------------|---------------|---------------|
| Components | 0S0000/1S0000 | 0C0000/1C0000 | 0S1000/1S1000 | 0C1000/1C1000 |
| Line Reactor (LR) | X | X | X | X |
| Trap Reactor (TR) | X | X | X | X |
| Capacitor (Cap) | X | X | X | X |
| Trap Fusing, FU1, FU2, FU3 | X | X | X | X |
| Contactor (CNT) | X | X | X | X |
| Transformer (XFMR) | X (Type 1) | X | X | X |
| XFMR Fusing, FU4, FU5 | X (Type 1) | X | X | X |
| PQConnect Board | | | X | X |



PQConnect Board Mounted on Front Door of Enclosure. Optional



Customer Is Responsible For Installation to Meet All National And Local Electrical Codes.

Material(s) Shall be RoHS Compliant

THE INFORMATION AND DESIGNS CONTAINED IN THIS DRAWING ARE CONFIDENTIAL AND THE PROPRIETARY PROPERTY OF ALLIED MOTION TECHNOLOGIES INC. AND ITS SUBSIDIARIES. NEITHER THIS DESIGN NOR ANY INFORMATION CONTAINED IN THIS DRAWING MAY BE REPRODUCED OR DISCLOSED TO OTHERS WITHOUT THE EXPRESS WRITTEN CONSENT OF ALLIED MOTION TECHNOLOGIES INC. AND ITS SUBSIDIARIES.

| NO | REVISION | DATE | BY |
|----|--------------------------|-----------|-----|
| C | 5654, GE to ABB CNT CHG. | 3/14/2021 | DSW |
| B | Add PQ Connect | 8/24/18 | DSW |

| TOLERANCES (EXCEPT AS NOTED) | |
|------------------------------|-------------------------|
| DECIMAL | .XX ± .25 .XXX ± .10 |
| FRACTIONAL | ± 1/16 |
| ANGULAR | ± 1° |

| | | |
|---|-------------------------|--|
| | | W182N10611 (Rev 13) Feb Germantown, WI 53022 © 2022 TCI, LLC |
| Harmonic Guard Passive HGP, 250HP, 600/3/60, Open and Type 1 | | |
| DSN BY: DSW SCALE: 1/8 | DATE: 2/15/18 DRAWN: | 105710DG SHEET 1 OF 2 |

